

## PE Anti-Mouse TCR V $\gamma$ 1 Monoclonal Antibody



天津三箭生物技术股份有限公司  
Tianjin Sungene Biotech Co., Ltd.  
精准 高效 稳定 Precision Efficient Stable

Catalog Number	Vial Size
M100T1-09B	50 $\mu$ g
M100T1-09D	200 $\mu$ g

**Market** | 400-621-0003  
marketing@sungenebiotech.com

**Support** | 022-66211636-8024  
techsupport@sungenebiotech.com

**Web** | www.sungenebiotech.com

**Important Note:** Centrifuge before opening to ensure complete recovery of vial contents.  
This product is guaranteed up to one year from purchase.

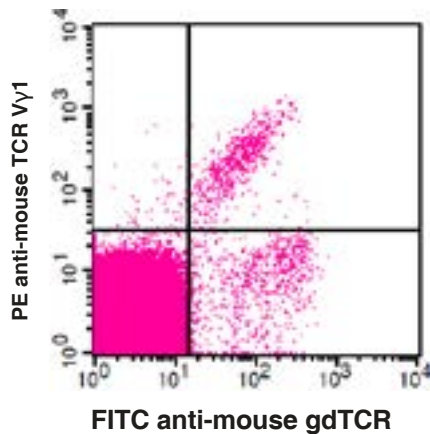
### Purified Antibody Characterization

Clone	Isotype	Reactivity
2.11	Hamster IgG	Mouse

### Description

T cell receptor (TCR) is a heterodimer consisting of an  $\alpha$  and  $\beta$  chain (TCR  $\alpha/\beta$ ) or a  $\gamma$  and  $\delta$  chain (TCR  $\gamma/\delta$ ). TCR associates with CD3 to form a CD3/TCR complex. The CD3/TCR plays a key role in antigen recognition, signal transduction, and T cell activation. TCR V $\gamma$ 1.1 (Garman nomenclature) is also called TCR V $\gamma$ 1 (Tonegawa nomenclature). The V $\gamma$ 1 gene almost exclusively rearranges to the J $\gamma$ 4-C $\gamma$ 4 gene. V $\gamma$ 1-J $\gamma$ 4-C $\gamma$ 4 expressing cells constitute a major population of  $\gamma/\delta$  T cells in thymus and peripheral lymphoid organs in adult mice, but they are only composed of a minor population of  $\gamma/\delta$  T cells during fetal and early postnatal life. V $\gamma$ 1 T cell development can happen in thymus-dependent and thymus-independent manners.

### Illustration of Immunofluorescent Staining



C57BL/6 mouse splenocytes CD3<sup>+</sup> stained  
with APC anti-mouse gdTCR and  
PE anti-mouse TCR V $\gamma$ 1

### Product Information

**Conjugation:** PE

**Formulation:** PBS pH 7.2, 0.09% NaN<sub>3</sub>,  
0.2% BSA

**Concentration:** 0.2 mg/ml

**Storage:** Keep as concentrated solution. Store  
at 4°C and protected from prolonged exposure  
to light. **Do not freeze.**

**Application:** Recommended Application: FC

**Usage:** Each lot of this antibody is quality  
control tested by immunofluorescent staining  
with flow cytometric analysis (The amount of  
the reagent is suggested to be used  $\leq 0.25 \mu$ g  
/10<sup>6</sup> cells in 100  $\mu$ l). Since applications vary,  
the appropriate dilutions must be determined  
for individual use.

### References

- [1] Pereira, P., et al. 1995. J. Exp. Med. 182:1921.
- [2] Grigoriadou, K., et al. 2002. J. Immunol. 169:3736.

**For Research Use Only.**